

COLONNADE

INSTALLATION INSTRUCTIONS



List of Materials

- 1 fiberglass beam assembly (2x8)
- Fiberglass rafter (number dependant on size of colonnade)
- Fiberglass purlin (number dependant on size of colonnade)
- Columns (number dependant on size of colonnade)
- 2 tuscan base and capital for each column
- 2 4x4 steel post cores
- 4 decorative bolt covers
- 4 ½ inch bolts (10 inches long) to attached beam to post cores
- 16 8” black screws with washers to attach rafters to the beam
- 18 5” screws to attach purlins to the rafters
- Ubolts and carriage bolts to attach the steel post cores the angle irons

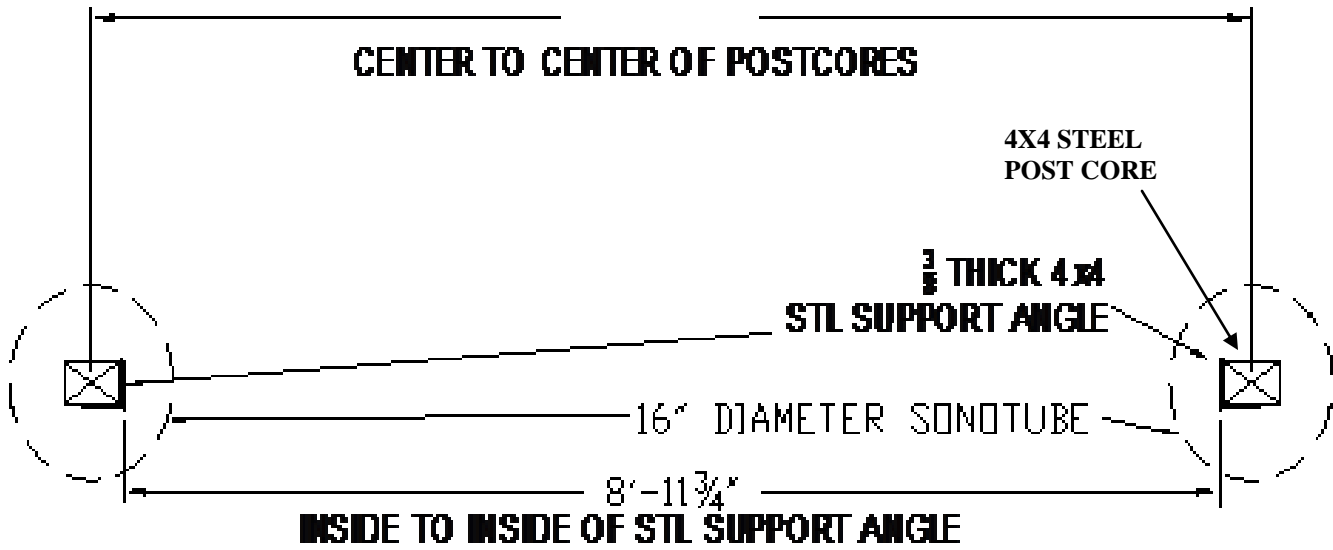
Tools Required

- Drill with a ½” metal bit 10” long
- Wrenches
- Clamps
- Driver for screws and bolts
- Level
- Tape measure

- Metal saw (sawzall with metal blade)
- Two eight foot step ladders

COLONNADE
INSTALLATION INSTRUCTIONS

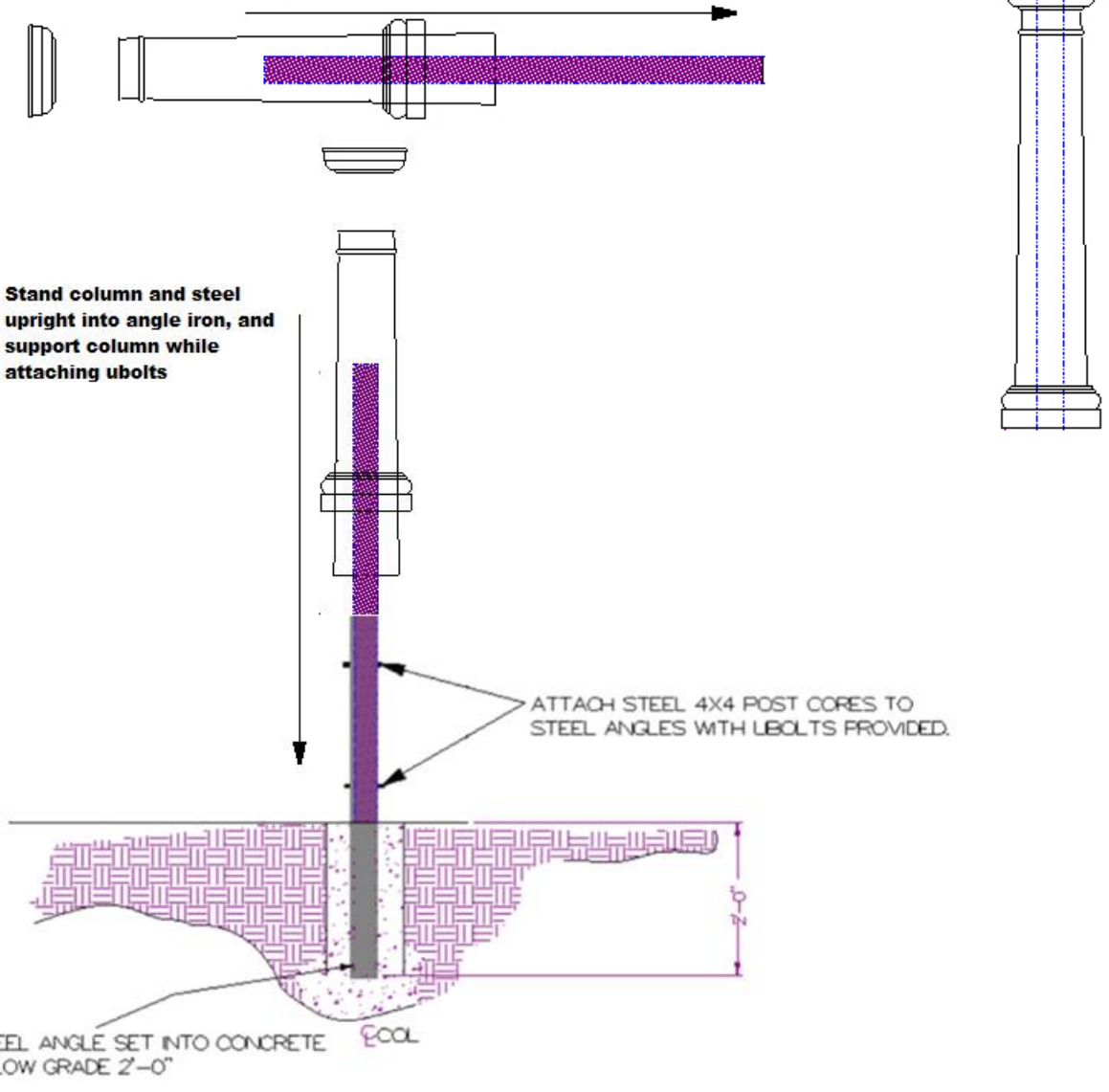
FOUNDATION LAYOUT



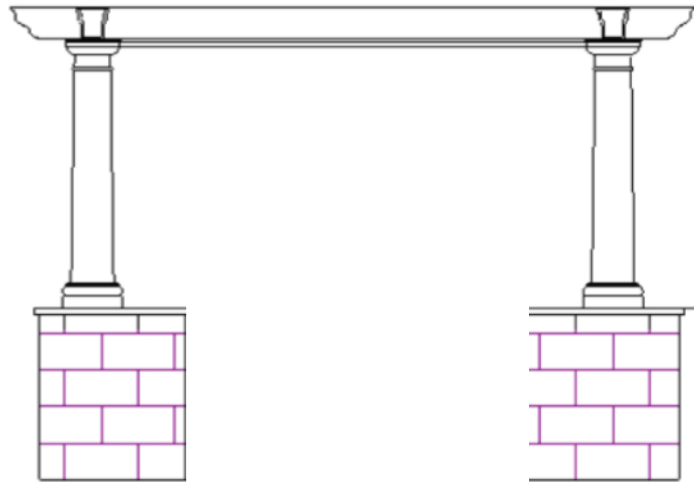
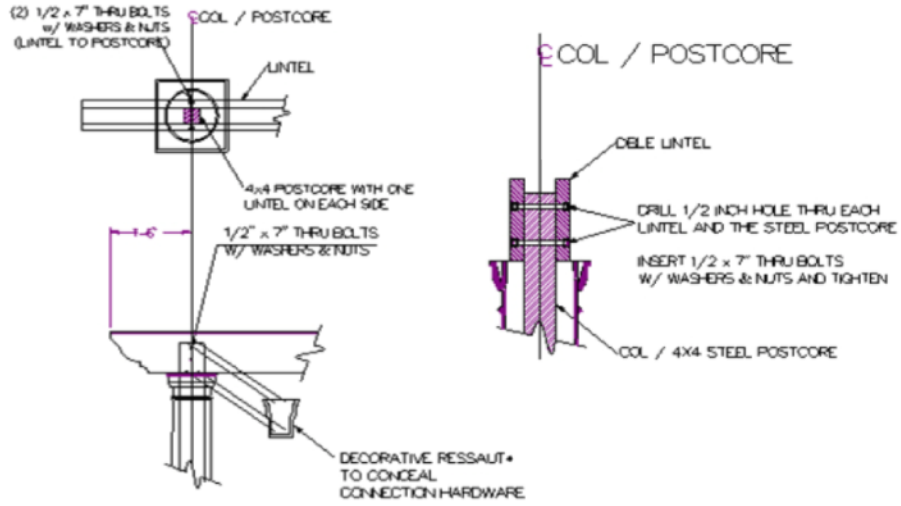
COLONNADE INSTALLATION INSTRUCTIONS COLUMN INSTALLATION

SLIDE COLUMNS, BASES
AND CAPITALS OVER THE
TOP OF THE 4X4 POST CORE.

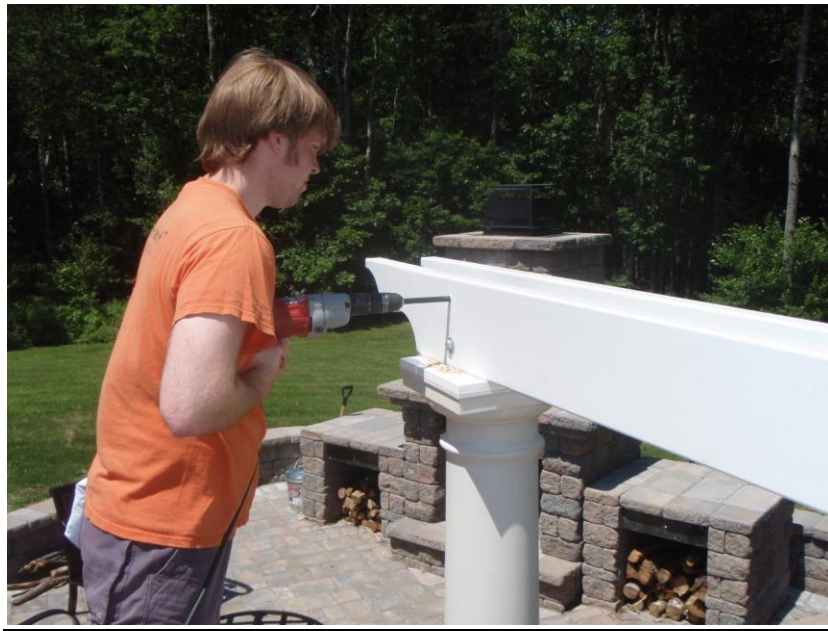
4X4 STEEL POST CORE SHOWS ABOVE THE COLUMN
FOR BEAM ATTACHMENT.



COLONNADE
INSTALLATION INSTRUCTIONS
BEAM ASSEMBLY INSTALLATION

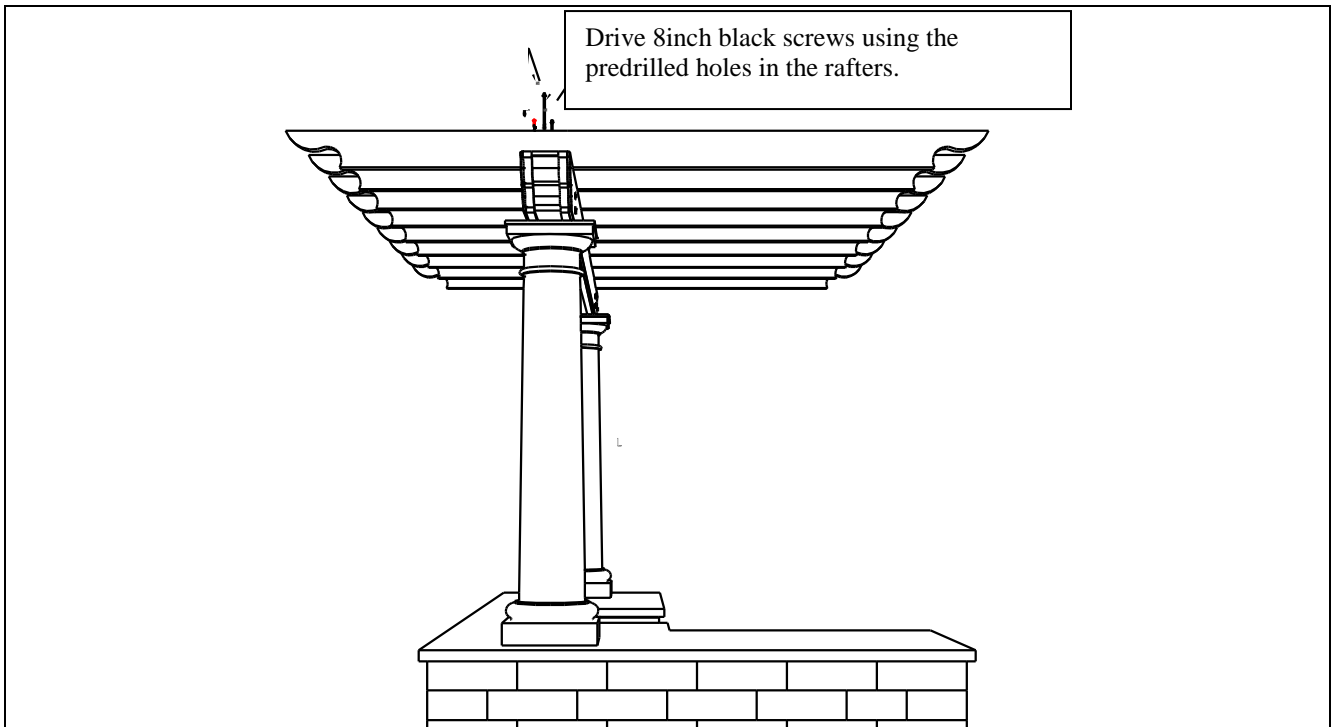


COLONNADE
INSTALLATION INSTRUCTIONS
BEAM ASSEMBLY INSTALLATION



HOLD BEAMS IN PLACE AGAINST THE POST CORE WITH A CLAMP. USE EIGHT INCH LONG $\frac{1}{2}$ " DRILL BIT TO DRILL THRU EACH LINTEL AND THE STEEL POST CORE IN A SINGLE PASS.

COLONNADE
INSTALLATION INSTRUCTIONS
RAFTER INSTALLATION



Set the screws into the predrilled holes in the rafters on the ground first. Make sure point of the screw is just in the bottom hole.

COLONNADE
INSTALLATION INSTRUCTIONS
RAFTER INSTALLATION



Leave protective plastic on the rafters when installing to help keep rafters clean of handprints. Set back screw first, check level and set front screw. Be careful not to overtighten.



Set then and level the leftmost and rightmost rafters first. Then set the backmost and frontmost purlin. Double check level on both rafters and purlins. Begin installing the remaining rafters and then install the remaining purlins.

COLONNADE
INSTALLATION INSTRUCTIONS
RAFTER and PURLIN SPACING

Space the first rafter 10 and 1/2 inches in from the tip of the beam. Position each of the remaining rafters at 19 inches from the face of the previous rafter (19 inches equals the width of one rafter plus the distance between the rafters)

Fasten the purlins using the 5 inch self drilling screws. Install one screw in each purlin along each of the outside rafters. Use the remaining screws to fasten the middle of the purlins to one of the middle rafters. Space the first purlin 10 and 1/2 inches in from the tip of the rafter. Position each of the remaining purlins at 15 inches from the face of the previous purlin (15 inches equals the width of one purlin plus the distance between the purlins)