

# STONE RIDGE



STONE RIDGE: Travertina (Random)

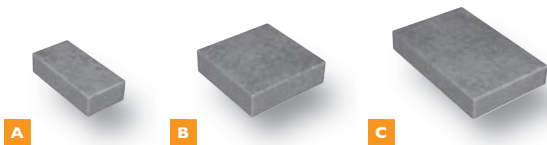


# STONE RIDGE

Manufactured by:  
**NICOLOCK**  
 paving stones & retaining walls

## Features

- Multi-size rectangular shapes • Slightly textured riven surface • Slightly chamfered edges
- Can be combined with STONE RIDGE XL



**ADD  
 RIDGE CIRCLE  
 TO YOUR  
 DESIGN!**

## Specifications

	width	length	thickness	pcs./s.f.	s.f./pallet	pcs./pallet	lbs./pallet
<b>A</b>	4-3/8"	9"	2-3/8"	-	110	130	3,080
<b>B</b>	9"	9"	2-3/8"	-	-	60	-
<b>C</b>	9"	13-1/2"	2-3/8"	-	-	50	-

Sizes not sold separately.

## Color Selections

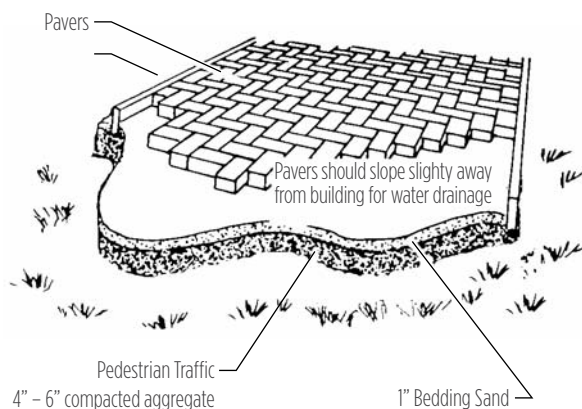


\* denotes premium color  
 \*\* denotes deluxe color

### INSTALLATION GUIDELINES: SAND

After excavation, compact the subgrade and install a woven separation fabric. Spread and compact a base of clean, graded, dense aggregate (road base). Typical compacted base thickness is 4-6" for pedestrian applications. Pavers are set on a loosely screeded 1" bed of graded, clean concrete sand. Maintain a joint size of 1/16" - 3/16". When pavers are set, compact paving stones into sand with mechanical plate vibrator. Joint sand may be spread over paving stones during compaction. Installed pavers should be set 1/8" to 1/4" above final elevations to compensate for any potential settlement. Spread clean dry sand over surface and broom sweep to fill joints.

### CROSS-SECTION OF TYPICAL INSTALLATION



**CAUTION: Always use a plate compactor with a pad when installing any textured paving stone.**



### Nicolock's Paver-Shield™

- Ultra-dense surface with more color and more protection. Nicolock has color from top to bottom throughout the paver ensuring a lifetime of beauty. Iron oxide pigments are guaranteed not to fade!

**CAUTION: Always use a plate compactor with a pad when installing textured paving stones.**

**NOTE:** All measurements are nominal. Variance in square footage or linear footage coverage can be up to 5% depending on joint width. The possible occurrence of efflorescence does not affect the structural integrity of the product. Efflorescence is a normal occurrence in concrete products and will dissipate with normal weathering. The use of concrete as a base or setting bed may increase the possibility of efflorescence.